

Tradestream Global™

Mini Server Manual

Tradestream Global AG.
Baarerstrasse 135, 6302 Zug
Switzerland

Tel: +41 41 763 55 30
Fax: +41 41 763 55 29

Table of Contents

Software Engineering Disclaimer3

End User License Agreement3

Customer Support.....3

Purpose of This Document.....4

Minimum System Requirements4

Configuring Tradestream Global to Work Behind a Firewall.....5

Mini Server User Guide6

Appendix A: License Agreement.....9

Software Engineering Disclaimer

The information contained in this document is believed to be accurate and reliable. However, Tradestream Global AG. cannot guarantee the completeness and accuracy of any published material.

The purpose of this document is purely informational and should not be treated as solicitation for technical or professional services. If such services are required, an interested party should contact the offices of Tradestream Global AG.

Tradestream Global AG. cannot be held responsible for misuse, deliberate or accidental, of the information contained in this document. The parties engaging in electronic trading should be aware of the scope and extent of risk, whether it being related to technology, market conditions, or other reasons, which are considered part of the electronic trading environment.

End User License Agreement

See Appendix A.

Customer Support

As a technology provider, **Tradestream Global AG** has a Technical Services desk available to you during the business hours of 09:00 – 17:00 EST, Monday through Friday by calling 1-214-265-6585 or via email at support@tradestreamglobal.com

Purpose of This Document

This document has been prepared to help provide an explanation of the front end server protocol. It is intended to be used by developers who wish to interface their front-end application or automated trading system easily to our server side functions without requiring server facilities of their own.

Minimum System Requirements

Listed below are minimum system requirements and recommendations for top performance. If you are an active trader or professional trader, the recommendations for optimal performance will be the requirements to follow. It is also recommended that in order to take full advantage of the advanced features of Tradestream systems you run Tradestream on multi-monitor systems. Tradestream supports up to 8 monitors on 1 PC.

The speed and reliability of your Internet service provider is crucial to optimum performance as well. Using proprietary large-scale Internet service providers that depend primarily on proxy servers may cause quotes to be inconsistent, the loss of data, and delay of information regarding your trades. This is why it is important to have an ISP with the most direct connection possible to the Tradestream Global network and the capacity to handle Internet traffic during peak hours of trading.

Tradestream Global recommends connection be consistent ADSL, Cable or T1 but individual users can connect with as little as 36kbs modem connections.

Minimum Requirements, with a single monitor are:

- Intel Pentium II processor 400 MHz
- 128 MB RAM
- 1 GB hard drive with at least 150 MB of free space
- 4 MB video graphics adapter that supports at least a 256 color palette and 1024 X 768 resolution
- 56K dial up modem (speed <250ms)
- Windows Operating System (Y2K compliant)

Recommended Requirements, with multiple monitors are:

- Best available CPU
- 256 MB RAM or more
- 18 GB hard drive with 1GB of free space
- 16 MB video graphics adapter that supports at least a 256 color palette and 1024 X 1024 resolution
- Broadband (T1, DSL, ISDN or cable modem)
- Windows 2000 or XP

Be aware of security software, virus software, or firewalls that scan all incoming data as it enters your computer since these applications will potentially affect the speed and accuracy of the data you receive.

Configuring Tradestream Global to Work Behind a Firewall

Tradestream Global can easily be configured to run behind a firewall but does require the cooperation of the Network Administrator and certain open ports on the firewall itself. The system requires port 58886 for chart data, 59869 for order routing, 9898 for quotes and port 39898 for load balancing messages. The auto update function requires port 21. It requires these ports to send and receive data to destination IPs in the range 66.101.0.X.

How to check if your ports are open?

Windows uses the Telnet Protocol, part of the TCP/IP suite of protocols, to connect to a remote computer over a network. For our purposes, a telnet test is nothing more than a test to determine if you are able to establish a connection to the Tradestream Global client data servers. The telnet method that Windows 95, 98, me, and NT use is all the same. However, with the release of Windows 2000, telnet has changed so the procedures for each O/S will be explained below

Telnet in Windows 95, 98, or Me

- Click on the **Start** button
- Click on **Run**
- Type **Telnet** and press **Enter**
- Click on the **Connect** menu
- Select **Remote System**
- Enter **66.101.0.198 AND 66.101.0.198 AND 66.101.0.198 and 66.101.0.216 and 206.129.170.17** as the host
- Enter the **port 58886, port 59869, port 9898, port 39898 and port 21**

Telnet in Windows 2000

- Click on the **Start** button
- Click on **Run**
- Type **command** press **Enter**
- Type **telnet 66.101.0.198 port 5120 or 66.101.0.198 port 5120 or 206.129.170.17 port 21 or telnet 66.101.0.216 port 39898**

A successful telnet session will show the host name in the title bar when using Windows 95, 98, or NT. In Windows 2000, a successful telnet session will show a very brief connection and then a flashing cursor with no prompt.

If ok, then you should be able to log in to Tradestream. If none work, the ports most likely are not open. Confirm with the Net Admin that these ports are open!

Mini Server User Guide

Mini Server package includes two separate components. One is Mini Server which is MiniServer.exe, the other is a tool for testing the Mini Server which consists of TestMiniServ.exe and msvbvm60.dll.

1. Mini Server

1.1 Run MiniServer.exe

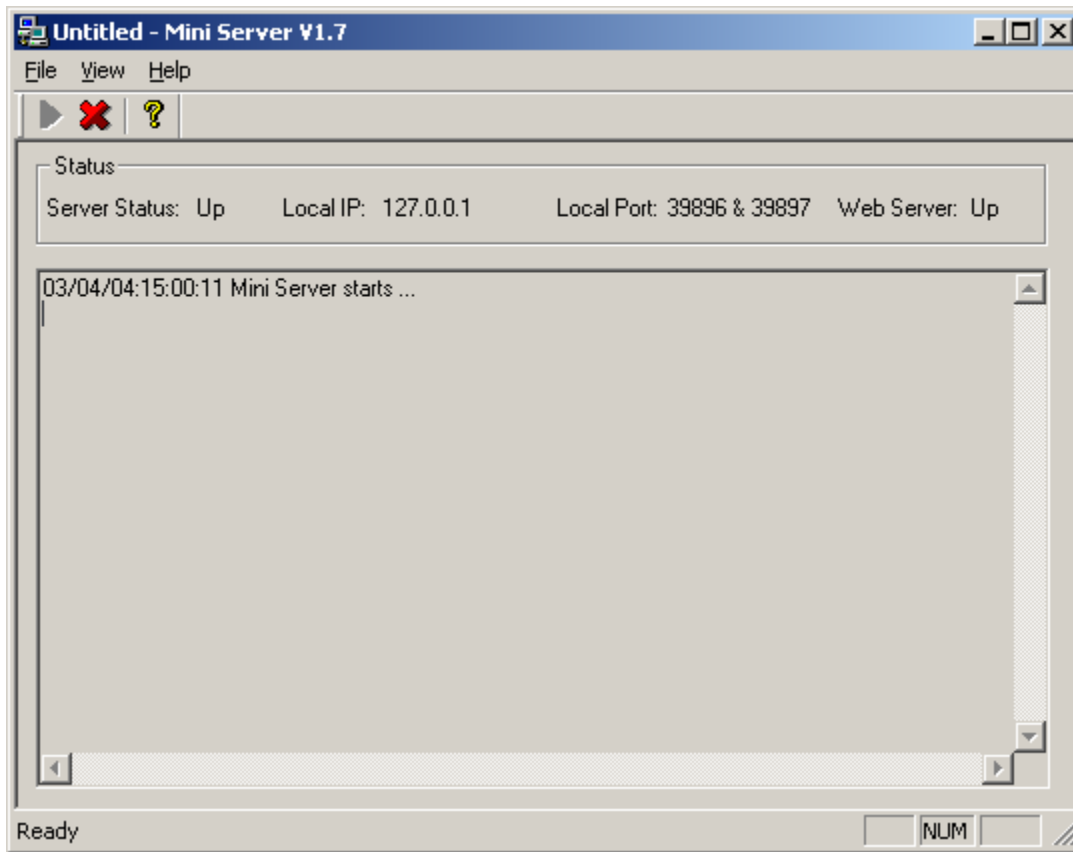


Fig. 1 Mini Server

1.2 Start the server

There are two ways to start:

- a) Select from menu file -> start
- b) Click toolbar ▶

Note:

“Server Status”: the current status of server and can be up: running, down: or close

“Local IP” : the server’s IP always uses 127.0.0.1

“Local Port” : the server’s Port always is 39896

“Web Server” : the current status of connecting to TradeStream Global’s Servers.

2. Tool for testing the Mini Server

2.1 run TestMiniServ.exe and make sure file of msvbvm60.dll in a reachable directory.

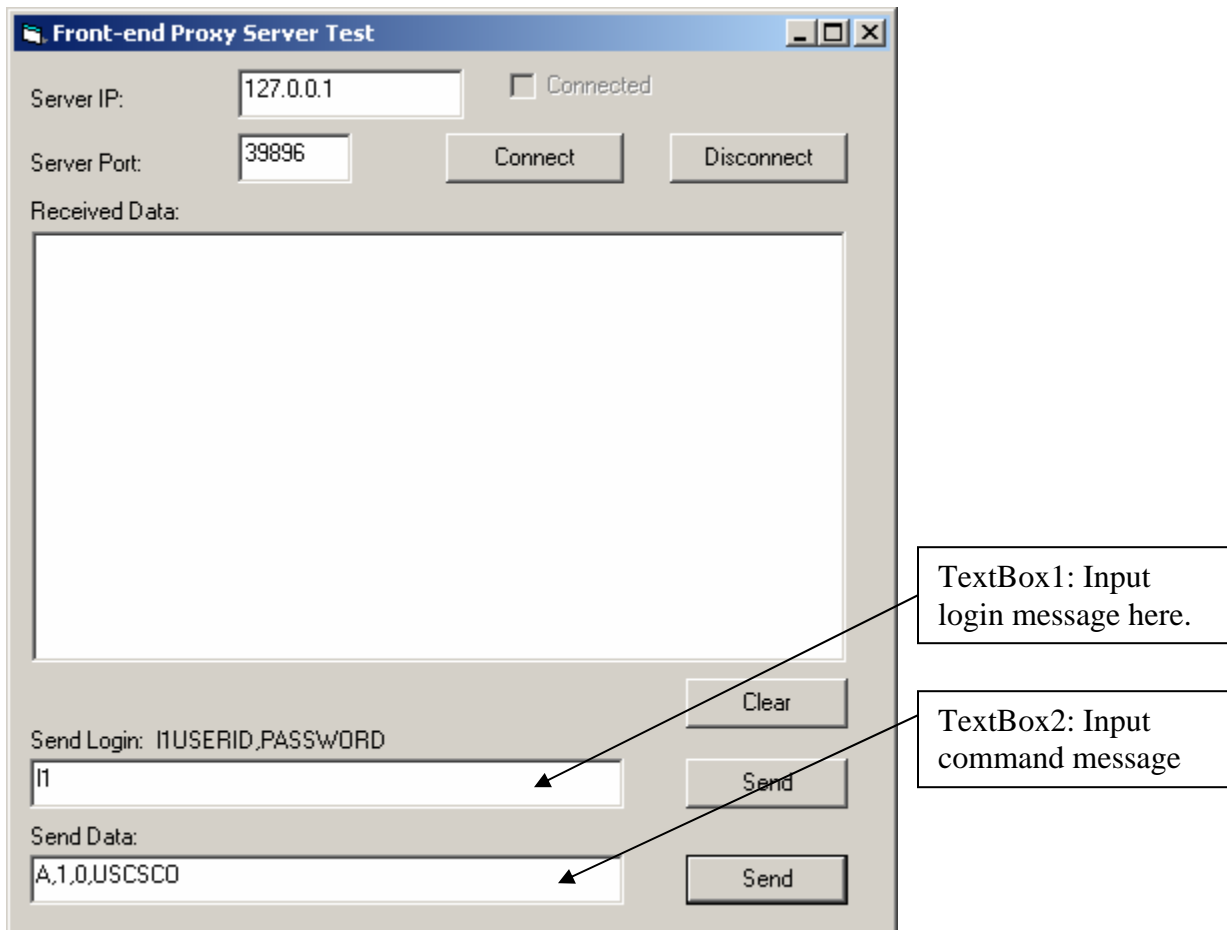


Fig.2 TestMiniServer

2.2 Steps for testing:

- a. Click “Connect” to connect to “Mini Server”
- b. Send Login Message:
Input “11USERID, PASSWORD” in the TextBox1, then click “Send”
“Mini Server” will return messages like below:
L1CA0013 ←account
LD80
- c. Send Select Account Message:
Input “ACCOUNT” in the TextBox2, then click “Send”
“Mini Server” will return this account’s info.
- d. Now you can send command messages to request data (see Mini Server Protocol document for more information)

Here are some examples:

A,1,1,USCSCO ← require CSCO’s Level I data
A,b,1,USUSZ3 ← require USZ3 ’s Level I data

Appendix A: License Agreement

TRADESTREAM GLOBAL AG. “PLAIN LANGUAGE” LICENSE AGREEMENT STATEMENT AND LIMITED WARRANTY FOR TRADESTREAM GLOBAL SOFTWARE PRODUCTS.

IT IS IMPORTANT THAT YOU READ THIS FULLY AND CAREFULLY BEFORE INSTALLING.

This license statement and limited warranty constitutes a legal agreement ("License Agreement") between you (either as an individual or single entity) and **TRADESTREAM GLOBAL AG.** ("TRADESTREAM") for the software product ("Software") identified above, including any software, media, and accompanying on-line or printed documentation.

BY INSTALLING, COPYING, OR OTHERWISE USING THE SOFTWARE, YOU AGREE TO BE BOUND BY ALL OF THE TERMS AND CONDITIONS OF THE LICENSE AGREEMENT.

The term of this license is perpetual, commencing upon your installation, copying or use of the software. If you do not agree with the terms and conditions of the License Agreement, promptly terminate the installation.

Upon your acceptance of the terms and conditions of the License Agreement, TRADESTREAM grants you the right to use the Software in the manner provided below. This Software is owned by TRADESTREAM and is protected by copyright law, international copyright treaties, as well as other proprietary notices. Therefore, you must treat this Software like any other copyrighted material (a book for example), except that you may either make one copy of the Software solely for backup or archival purposes or transfer the Software to a single hard disk provided you keep the original solely for backup or archival purposes.

You may transfer the Software and any documentation on a permanent basis provided you retain no copies and the recipient agrees to the terms of the License Agreement. Except as provided in the License Agreement, you may not transfer, rent, lease, lend, copy, modify, translate, sublicense, time-share or electronically transmit or receive the Software, media or documentation.

You acknowledge that the Software in source code form remains a confidential trade secret of TRADESTREAM and therefore you agree not to modify the Software or attempt to reverse engineer, decompile, or disassemble the Software, except and only to the extent that such activity is expressly permitted by applicable law notwithstanding this limitation.

As a Confidential trade secret, you shall use your best efforts to protect the proprietary or confidential information supplied by TRADESTREAM in its Software, in the same manner in which you would protect your own proprietary or confidential information, but not less than reasonable precautions to protect such proprietary or confidential information and shall

not use such proprietary or confidential trade secret for your own benefit or the benefit of any other person or entity, except as may be specifically permitted hereunder.

If you have installed any upgrade version of the Software, it constitutes a single product with the TRADESTREAM software that you upgraded. You may use or transfer the upgrade version of the Software only in accordance with the License Agreement.

This Software is subject to U.S. Commerce Department export restrictions, and is intended for use in the country into which TRADESTREAM provided it (or if sold into the European Economic Community, intended for use therein).

The Software might include source code, redistributable files, and/or other files provided by a third party vendor (Third Party Software). Since use of Third Party Software might be subject to license restrictions imposed by the third party vendor, you should refer to the on-line documentation (if any) provided with Third Party Software for any license restrictions imposed by the third party vendor. In any event, any license restrictions imposed by a third party vendor are in addition to, not in lieu of, the terms and conditions of the License Agreement.

All TRADESTREAM Software provided under this Agreement, including but not limited to libraries and source code remain TRADESTREAM's exclusive property. TRADESTREAM will retain all right title and interest in and to the libraries, source code, and other files, including the Intellectual Property contained in such property (including but not limited to, ownership of all copyrights, patents, trademarks, service marks worldwide). Regardless of any modifications that you make, you may not distribute any files (particularly TRADESTREAM source code and other non-executable files).

Nothing in the License Agreement permits you to derive the source code of files that TRADESTREAM has provided to you in executable form only, or to reproduce, modify, use, or distribute the source code of such files.

LIMITED WARRANTY Software provided under this Agreement, including but not limited to libraries, source code and other files are provided "as is," without warranty of any kind, TRADESTREAM warrants that the Software, as updated and when properly used, will perform substantially in accordance with the accompanying documentation, and any Software media will be free from defects in materials and workmanship, for a period of ninety (90) days from the date of receipt. Any implied warranties on the Software are limited to ninety (90) days. Some states/jurisdictions do not allow limitations on duration of an implied warranty, so the above limitation may not apply to you.

TRADESTREAM's and its suppliers' entire liability and your exclusive remedy shall be correction, repair or replacement of the Software that does not meet TRADESTREAM's Limited Warranty. This Limited Warranty is void if failure of the Software has resulted from accident, abuse, or misapplication. Any replacement Software will be warranted for the remainder of the original warranty period or thirty (30) days, whichever is longer.

TO THE MAXIMUM EXTENT PERMITTED BY APPLICABLE LAW, TRADESTREAM DISCLAIMS ALL OTHER WARRANTIES AND CONDITIONS,

EITHER EXPRESS OR IMPLIED, INCLUDING, BUT NOT LIMITED TO, IMPLIED WARRANTIES OF MERCHANTABILITY, FITNESS FOR A PARTICULAR PURPOSE, TITLE, AND NON-INFRINGEMENT, WITH REGARD TO THE SOFTWARE, AND THE PROVISION OF OR FAILURE TO PROVIDE SUPPORT SERVICES.

THIS LIMITED WARRANTY GIVES YOU SPECIFIC LEGAL RIGHTS. YOU MAY HAVE OTHERS, WHICH VARY FROM STATE/JURISDICTION TO STATE/JURISDICTION. LIMITATION OF LIABILITY TO THE MAXIMUM EXTENT PERMITTED BY APPLICABLE LAW, IN NO EVENT SHALL TRADESTREAM OR ITS SUPPLIERS BE LIABLE FOR ANY SPECIAL, INCIDENTAL, INDIRECT, PUNITIVE OR CONSEQUENTIAL DAMAGES WHATSOEVER INCLUDING, WITHOUT LIMITATION, DAMAGES FOR LOSS OF BUSINESS PROFITS, BUSINESS INTERRUPTION, GOODWILL, LOSS OF BUSINESS INFORMATION, OR ANY OTHER PECUNIARY LOSS) WHETHER BASED ON BREACH OF CONTRACT TORT (INCLUDING NEGLIGENCE) OR OTHERWISE, ARISING OUT OF THE USE OF OR INABILITY TO USE THE SOFTWARE PROVIDED BY TRADESTREAM OR THE PROVISION OF OR FAILURE TO PROVIDE SUPPORT SERVICES, EVEN IF TRADESTREAM HAS BEEN ADVISED OF THE POSSIBILITY OF SUCH DAMAGES. IN ANY CASE, AFSI'S ENTIRE LIABILITY UNDER ANY PROVISION OF THIS LICENSE AGREEMENT SHALL BE LIMITED TO U.S. \$2500. BECAUSE SOME STATES AND JURISDICTIONS DO NOT ALLOW THE EXCLUSION OR LIMITATION OF LIABILITY, THE ABOVE LIMITATION MAY NOT APPLY TO YOU.

NO AGENCY The parties to this Agreement are independent contractors and will have no power of authority to assume or create any obligation or responsibility on behalf of each other. This Agreement will not be construed to create or imply any partnership, agency or joint venture.

HIGH RISK ACTIVITIES The Software is not fault-tolerant and is not designed, manufactured or intended for use or resale as in hazardous environments requiring fail-safe performance in which the failure of the Software could lead directly to substantial financial loss ("High Risk Activities"). TRADESTREAM and its suppliers specifically disclaim any express or implied warranty of fitness for High Risk Activities.

GENERAL PROVISIONS This License Agreement may only be modified in writing signed by you and an authorized officer of TRADESTREAM. All terms of any purchase order or other ordering document shall be superseded by this License Agreement. If any provision of this License Agreement is found void or unenforceable, the remainder will remain valid and enforceable according to its terms. If any remedy provided is determined to have failed for its essential purpose, all limitations of liability and exclusions of damages set forth in the Limited Warranty shall remain in effect. Failure by either party at any time to enforce any obligation by the other party, to claim a breach of any term of this Agreement or to exercise any power agreed to hereunder will not be construed as a waiver of any right, power or obligation under this Agreement, will not affect any subsequent breach, and will not prejudice either parties as regards any subsequent action.

This License Agreement shall be construed, interpreted and governed by the laws of the state of Texas. This License Agreement gives you specific legal rights; you may have others which vary from country to country.

TRADESTREAM reserves all rights not specifically granted in this License Agreement. Neither party may assign any rights or obligations under this Agreement without the prior consent of the other; except that this Agreement may be assigned in whole as part of a corporate reorganization, consolidation, merger or sale of substantially all of its assets, provided that it has notified such other party within thirty (30) days subsequent to the effective date of such event. The provisions of this Agreement that by their nature and content are intended to survive the performance hereof shall so survive the completion and termination of this Agreement.

END